



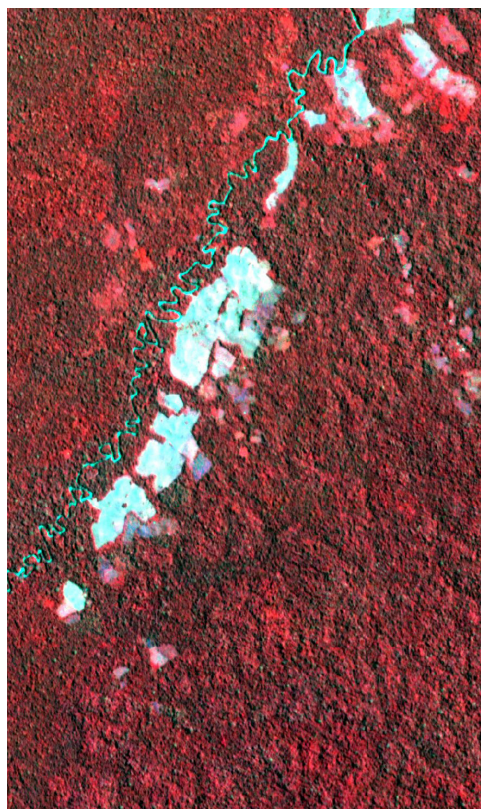
A&S STUDENT SYMPOSIUM 37TH ANNUAL

FRIDAY, APRIL 22, 2022

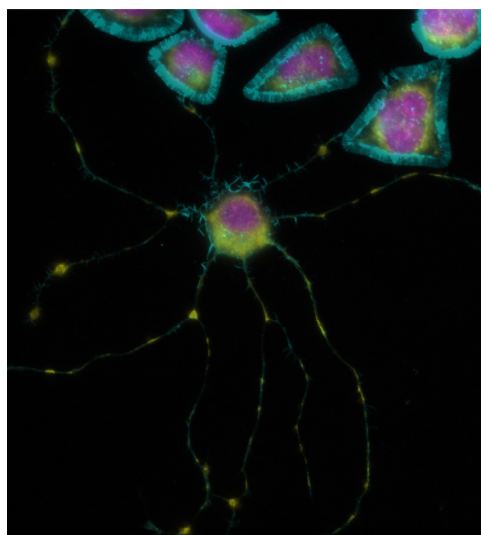
1:00–5:00 P.M.

MODLIN CENTER FOR THE
ARTS

GOTTWALD CENTER FOR THE
SCIENCES



as.richmond.edu/symposium



RICHMOND
School of Arts & Sciences™



A TRADITION OF CELEBRATING
OUR
COMMUNITY
OF LEARNERS



Welcome

Dear Friends and Colleagues,

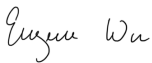
The School of Arts & Sciences at the University of Richmond is a community of faculty, staff, and students who explore, discover, and learn together. Today we gather to celebrate the creation of knowledge and to share in that new knowledge. Throughout the school year and summer, the School of Arts & Sciences supported hundreds of students in faculty-mentored research and scholarship that culminates in today's 37th A&S Student Symposium.

Despite the challenges presented by COVID-19 over the past two-plus years, our resilient students and faculty have continued to look inward and outward to learn more about themselves and all of us, from the Race and Racism Project to the examination of the effects of COVID-19 on campus and abroad. As the coordinator for this year's A&S Student Symposium, I invite you to converse with presenters and learn about artifacts dug up on campus, the battle against invasive species here in Virginia, and the impressive work of so many students and their faculty mentors. I invite you to touch a costume designed by a student for a student-directed play or be touched by an exhibit on the struggles of women in war-torn Syria. I invite you to open your eyes, your ears, and your mind.

This gathering could not have happened without the tireless work of many individuals that I hope you will see during the Symposium. Thanks to Interim Dean Dan Palazzolo, Associate Dean Kelling Donald, and the Undergraduate Research Committee for providing funds throughout the year to students and faculty to produce the work you see today. The staff of the Dean's Office, in particular Jennifer Lo Prete, Carolyn Smart, Robert Plymale, and Liza Williams, and the staff of the Technology Learning Center are providing major logistical support for the Symposium. I wish to also thank the academic administrative support team of several departments and programs who helped in securing spaces for the event, as well as the staff of the Modlin Center for the Arts for hosting the event.

I'm particularly proud to bring the Symposium back together in person this spring, in a time of renewal and optimism. Thank you for helping us celebrate the remarkable scholarship of our undergraduate students.

Sincerely,



Eugene Wu, Ph. D.

Associate Professor of Biology and Biochemistry
Biochemistry and Molecular Biology Program Coordinator
Arts & Sciences Student Symposium Coordinator

COVID-19 Mitigation: All participants and visitors to the A&S Student Symposium are encouraged to wear a high quality mask where it's practical to limit the possibility of transmitting COVID-19. If you are not feeling well or exhibit COVID-19 symptoms, please stay home.



On the cover

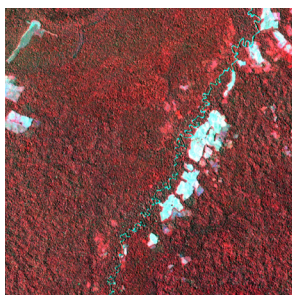
STUDENT-LED, FACULTY-MENTORED WORK

The School of Arts & Sciences remains committed to supporting undergraduate research through A&S Summer Fellowships, part of the Richmond Guarantee program. Whether it's in the lab, the art studio, or the archives, student-led, faculty-mentored is a hallmark of the School of Arts & Sciences experience. We are proud to share and celebrate this work at the A&S Student Symposium.



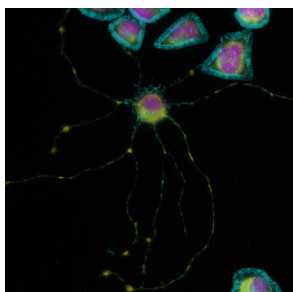
DEPARTMENT OF CLASSICAL STUDIES

Fragmentary Dish. Linoleum block print by Danny Saravia Romero showing the relief design on a Warwick China ceramic dish c. 1905. The dish is one of many finds excavated near Maryland Hall in 2019 and mended and studied by Danny and research teammates Emily Dixon and Lindsey Stevens in summer 2021. This linoleum block print was created with the help of Jen Thomas in the University's Book Arts Studio.



DEPARTMENT OF GEOGRAPHY & ENVIRONMENT

Image created by Eli Beech-Brown through research conducted under a NASA SERVIR grant that focuses on combining the results of a machine learning algorithm with object-based image analyses to map informal road networks from high resolution of satellite images in the Peruvian-Brazilian Amazon borderlands. This image shows deforestation in the Southwestern Amazon.



DEPARTMENT OF BIOLOGY

Fluorescence microscopy image of cultured cells that behave like neurons (CAD cells) taken from student research conducted in the Omar Quintero-Carmona Lab. This student research group uses these cells (CAD) as a model system to understand how cells organize and transport their mitochondria. There are a number of human diseases that result when mitochondrial transport is impaired, and this group is working to understand what genes are involved in normal mitochondrial transport.

Symposium Locations & Times

MODLIN CENTER FOR THE ARTS | 1:00-5:00 P.M.

BOOTH LOBBY

Symposium Check-In | Poster Presentations

COURTYARD 3:00-5:00 P.M.

King of Pops Refreshment Cart

M104 | Artist Presentations

GOTTWALD CENTER FOR THE SCIENCES | 1:00-5:00 P.M.

Room A100 | Room A201 | Room C200

KELLER HALL | 1:00-5:00 P.M.

Room V206 | Keller Hall Art Gallery

BOOKER HALL OF MUSIC | 1:00-5:00 P.M.

Room B102 | Room 207 | Room 226

University themed yard signs will mark each location.

To support all students who are presenting in the session, please stay for the duration of each panel.

PHOTOGRAPHY

Video and photographs taken during the Symposium will be used in University publications and on the website. If you do not wish to be included in videos or photographs, please alert the photographer and/or videographer.

Artist Presentations

MODLIN CENTER FOR THE ARTS, ROOM M104

1:30-2:45 P.M.

SANA MOUAYD AZEM

The Story She Holds

FACULTY MENTOR: Sonja Bertucci

3:15-4:45 P.M.

SHERLEY ARIAS-PIMENTEL

"I wish I lived in a world where education is ..."

FACULTY MENTOR: Patricia Herrera, Sylvia Gale

MACLAINE BAMBERGER

Pandemic Art

FACULTY MENTOR: Megan Driscoll

KELLER HALL ART GALLERY

3:15-4:45 P.M.

MEGAN SALTERS

A Sense of Place

FACULTY MENTOR: Sonja Bertucci

CAROLE WEINSTEIN INTERNATIONAL CENTER

JULIA BRITTAIN

At the Intersection of Contagion and Connection: HIV/AIDS and Richmond's LGBTQ+ Community

FACULTY MENTOR: Laura Browder

Note: Work presented on April 21, 2022.

Oral Presentations

BOOKER HALL OF MUSIC, ROOM B102

1:00-1:25 P.M. Richard Waller, session moderator

MAKY ESPINOZA

Pygmies and Nilotic Scenes in Roman Visual Culture: An Analysis of Proto-Racism in Colonial Othering

FACULTY MENTOR: Megan Driscoll, Agnieszka Szymska

1:25-1:50 P.M. Richard Waller, session moderator

HADLEY BECKSTRAND

Michaelina Wautier: Overcoming Institutional Barriers for Women Artists in Early Modern Europe

FACULTY MENTORS: Megan Driscoll, Elena Calvillo

1:50-2:10 P.M. Richard Waller, session moderator

HADLEY BECKSTRAND

Harnett Fellow

FACULTY MENTOR: Richard Waller

BOOKER HALL OF MUSIC, ROOM B207

1:00-1:15 P.M. Ernest McGowan, session moderator

JILLIAN YATES

Racism, Pandemics, and the GRTC

FACULTY MENTOR: Laura Browder

1:15-1:45 P.M. Ernest McGowan, session moderator

MARIA PERRY, GRACE CHAHAL, MAIA DEMITRACK, WILL KARMEN, NIKKI MAY

Race and Racism Project

FACULTY MENTOR: Ernest McGowan, Melissa Ooten

Oral Presentations

1:45-2:15 P.M. Ernest McGowan, session moderator

**RAZAN KHALIL, CHRIS MITCHELL, KAITLYN O'LEARY, NY'ASIA FLOWERS,
LAUREN OLIGINO**

Race and Racism Project

FACULTY MENTOR: Ernest McGowan

2:30-2:45 P.M. Monika Siebert, session moderator

SHIRA GREER

"Freer and More Human:" Latin American Liberation Theology, Violence, and Fugitivity

FACULTY MENTORS: Armond Towns, Abigail Cheever

2:50-3:05 P.M. Monika Siebert, session moderator

MOLLY KATE KREIDER

"He Seemed to Watch the Slow Flowing of Time Beneath Him:" Temporality, Narrative Time, and the Southern Gaze in Light in August

FACULTY MENTOR: Peter Lurie

3:05-3:30 P.M. Monika Siebert, session moderator

REDA ANSAR

Postcolonial Pakistan: Mohsin Hamid

FACULTY MENTOR: Monika Siebert

4:00-4:15 P.M. Elizabeth Outka, session moderator

MAYA LIEBERMAN

Blurred Realities: "AIDS Plays" in American Theatre

FACULTY MENTOR: Elizabeth Outka

4:20-4:40 P.M. Elizabeth Outka, session moderator

JOSIE HOLLAND

World-Making, Queer Temporality, and Alternative Futurism in Speculative Fiction

FACULTY MENTOR: Nathan Snaza

4:40-5:05 P.M. Elizabeth Outka, session moderator

SEJONG TAKENAKA

How Writing in Young Adult Fiction is Used for Family, Academia, and Social Identities

FACULTY MENTOR: Elisabeth Gruner

Oral Presentations

BOOKER HALL OF MUSIC, ROOM B226

2:30-2:45 P.M. David Brandenberger, session moderator

HANNAH LEVINE

The Ford Foundation and Central America

FACULTY MENTORS: Nicole Sackley, Timothy Barney

2:45-3:00 P.M. David Brandenberger, session moderator

JOHN LIANG

An Investigation on Andrei Vlasov and the Russian Liberation Movement

FACULTY MENTOR: David Brandenberger

3:00-3:15 P.M. David Brandenberger, session moderator

JANIS PARKER

Framing Capital Punishment in Virginia History

FACULTY MENTOR: Pippa Holloway

3:15-3:40 P.M. David Brandenberger, session moderator

JOHN JONES SPENCER

Noble Pagans and Satanic Saracens: Literary Portrayals of Islam in Medieval Italy and Iberia

FACULTY MENTORS: Joanna Drell, Sydney Watts

4:00-4:25 P.M. Michelle Kahn, session moderator

CAMERON DONEZ

The Limits of Absolutism; The Second World War in Yugoslavia and German Ideological Insufficiency

FACULTY MENTORS: Michelle Kahn, David Brandenberger

4:25-4:50 P.M. Michelle Kahn, session moderator

CHARLES TABOR

Moctezuma and the Emergence of a Historical Dialogue in Sixteenth-Century New Spain

FACULTY MENTOR: Manuella Meyer

4:50-5:15 P.M. Michelle Kahn, session moderator

CARLY KESSLER

Building Back Greener

FACULTY MENTORS: Eric Yellin, Abigail Cheever

Oral Presentations

KELLER HALL, ROOM V206

1:00-1:20 P.M. Yvonne Howell, session moderator

ALEX PISTOLESI

Paralleli tra la retorica del fascismo di Mussolini e il populismo di Salvini (Parallels between Mussolini's fascism and the populism of Salvini)

FACULTY MENTOR: Lidia Radi

1:20-1:40 P.M. Yvonne Howell, session moderator

TEJA KINNEY

The Geographer Drank His Globe Away: A New Translation From Russian

FACULTY MENTOR: Yvonne Howell

2:30-2:50 P.M. Tom Mullen, session moderator

LOGAN JONES-WILKINS

Ecuador's Bumpy Road to Modernity

FACULTY MENTOR: Tom Mullen

2:50-3:15 P.M. Tom Mullen, session moderator

CALVIN HOGG

Reigen: Disorienting Sex and Disease

FACULTY MENTOR: Caroline Weist

3:20-3:45 P.M. Tom Mullen, session moderator

REIDE PETTY

The Vivifying Gifts: Sincerity and the Semiotic Construction of Cholera in Pushkin's Boldino Works

FACULTY MENTOR: Yvonne Howell

4:00-4:20 P.M. Mary Finley-Brook, session moderator

ROBERTO CHIA-BALMACEDA

The Costs to our Communities: An Environmental Justice Analysis on the Development of the Mountain Valley Pipeline

FACULTY MENTOR: Mary Finley-Brook

Oral Presentations

4:20-4:40 P.M. Mary Finley-Brook, session moderator

FRANK HANSON

Energy Insecurity in Sub-Saharan Africa

FACULTY MENTOR: Mary Finley-Brook, Guoping Huang

4:40-4:55 P.M. Mary Finley-Brook, session moderator

JASSIEM KONRAD

The Belt and Road Initiative: Railway Projects in Nigeria

FACULTY MENTOR: Mary Finley-Brook

GOTTWALD SCIENCE CENTER, ROOM A100

1:30-1:50 P.M. Jonathan Richardson, session moderator

RYAN SZYKOWNY

The Effects of Demolition Projects on Rat Activity in Urban Areas

FACULTY MENTOR: Jonathan Richardson

1:50-2:15 P.M. Jonathan Richardson, session moderator

KATHRYN GRAGE

Iterative Forecasting Models Create Accurate Predictions for the Near-Future Spread of an Invasive Insect Pest

FACULTY MENTORS: Jonathan Walter, Kristine Grayson

2:30-2:55 P.M. Linda Boland, session moderator

LEAH GHAZALI, ARIANA SOSA

*Deletion of Alternative Ribosomal Proteins in *Mycobacterium smegmatis**

FACULTY MENTOR: Sladjana Priscic

2:55-3:20 P.M. Linda Boland, session moderator

JULIETTE COPELAND

Phytochemicals and Neurodegeneration

FACULTY MENTORS: Melinda Yang, Kristine Nolin

Oral Presentations

3:20-3:45 P.M. Linda Boland, session moderator

JEAN GONZALES

Reactive Oxygen Species and Cysteine Modulation of Inwardly-Rectifying Potassium Channels

FACULTY MENTOR: Linda Boland

4:00-4:25 P.M. Omar Quintero-Carmona, session moderator

KATHRYN REDA

The Cytoskeleton, Mitochondria, and Charcot Marie Tooth Syndrome

FACULTY MENTOR: Omar Quintero-Carmona

4:25-4:50 P.M. Omar Quintero-Carmona, session moderator

JOSEPH RHODENHISER

Myosin-XIX Patterning on Mitochondria: A Super-resolution Microscopy Approach

FACULTY MENTOR: Omar Quintero-Carmona

GOTTWALD SCIENCE CENTER, ROOM A201

1:30-1:45 P.M. Mike Norris, session moderator

GWYNETH WELSH

The Topology of Exceptional Points

FACULTY MENTOR: Lipan Ovidiu

1:45-2:00 P.M. Mike Norris, session moderator

JACK RECKNER

A Chemical and Electrochemical Approach to CO₂ Reduction

FACULTY MENTOR: Michael Norris

2:00-2:20 P.M. Mike Norris, session moderator

JULIA VIDLAK

Synthetic and Computational Study of Bis(phosphino)pyrrole Ligands and Their Transition Metal Complexes

FACULTY MENTOR: Miles Johnson

Oral Presentations

2:30-2:55 P.M. Prateek Bhakta, session moderator

KAYLA LAMBERT, NATE LEVY

Modeling Kidney Function

FACULTY MENTOR: Lester Caudill

2:55-3:20 P.M. Prateek Bhakta, session moderator

LANDIN BARNEY

Dependence of Index of Refraction of Rare-Earth Metal Oxides with Temperature

FACULTY MENTOR: Mariama Dias

3:20-3:45 p.m. Prateek Bhakta, session moderator

IOANA-ANDREEA CRISTESCU, YING ZHU

Generating Optimal Liver Allocation System

FACULTY MENTOR: Prateek Bhakta

GOTTWALD, ROOM C200

1:00-1:20 P.M. Nicole Maurantonio, session moderator

KAMENE MANG'OKA

Poverty Porn in the Rhetoric of Ford's Foundation Philanthropy

FACULTY MENTORS: Timothy Barney, Nicole Sackley

1:20-1:40 P.M. Nicole Maurantonio, session moderator

JORDYN LOFTON

Aesthetics of the Old South: Why Contemporary Plantation Weddings Still Exist

FACULTY MENTOR: Nicole Maurantonio

1:45-2:00 P.M. Nicole Maurantonio, session moderator

HAYLEY SIMMS

James River Plantations Research Project

FACULTY MENTOR: Nicole Maurantonio

Oral Presentations

2:30-2:50 P.M. Stephen Long, session moderator

GEORGE ESTRADA

Aquinas and Suarez on Law

FACULTY MENTOR: Kevin Cherry

2:50-3:15 P.M. Stephen Long, session moderator

KEVIN GOU

Predicting Migration in the Sahel

FACULTY MENTOR: Stephen Long

3:15-3:30 P.M. Stephen Long, session moderator

HANNAH GRACE HOWELL

Rhetorical Invention and Iconographies of Protest in La Casa de Papel

FACULTY MENTOR: Paul Achter

4:00-4:15 P.M. Jennifer Erkulwater, session moderator

HANTANG QIN

Examining the Initial Government COVID Response Between the US and Australia

FACULTY MENTOR: Maia Linask

4:15-4:40 P.M. Jennifer Erkulwater, session moderator

SANDEEP KUMAR

Exploring Heterogeneties in COVID-19 Spread and Management

FACULTY MENTOR: Jennifer Erkulwater

Poster Presentations

All poster presentations will be held in the Modlin Center for the Arts Booth Lobby. To locate specific posters please consult poster layout map in this program.

MODLIN CENTER FOR THE ARTS

1:15-2:15 P.M.

CAMERON KEELEY-PARKER

Investigations of the Role Cerium Plays in Catalysis and Antimicrobial Activity

FACULTY MENTOR: Dominique Williams

POSTER #1

ANDREW COOK, CAROLYN FALCO

Detecting the Influence of Arginine Methylation on Ded1 in vivo and in vitro

FACULTY MENTOR: Angie Hilliker

POSTER #2

RACHEL PAK

Development of a Next Generation Matrix Model for Rickettsia parkeri in Amblyomma maculatum (Gulf Coast tick)

FACULTY MENTOR: Jory Brinkerhoff

POSTER #3

MIKAYLA QUINN

Bryophytes of Goochland County

FACULTY MENTOR: John Hayden

POSTER #4

PARKER ERNST

Assessing Human Influence on Ranavirus Infections in Vulnerable Turtle Populations

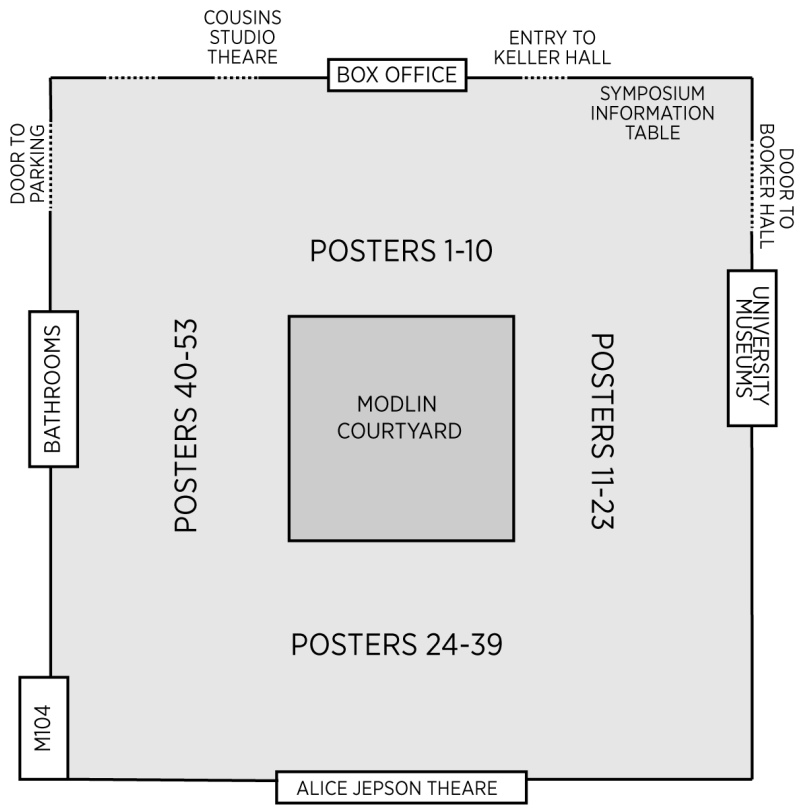
FACULTY MENTORS: Jennifer Sevin, Jory Brinkerhoff

POSTER #5

Poster Presentations

POSTER PRESENTATION FLOORPLAN

ALL POSTER PRESENTATIONS WILL BE HELD IN THE
MODLIN CENTER FOR THE ARTS BOOTH LOBBY



Poster Presentations

POSTER SESSION 1: 1:15-2:15 P.M.

ALEX ROBERTSON

Assessing Movement of Freshwater Snails Between Rock Pools with Spray Paint Mark-Recapture

FACULTY MENTOR: Kristine Grayson

POSTER #6

WESLEY TSAI

Analyzing Reference Panel Size in Searching for Human Genetic Continuity

FACULTY MENTOR: Melinda Yang

POSTER #7

ANNA LIU

The Effect of EGCG on RAW 264.7 Macrophages' Immune Response When Challenged with Woodsmoke

FACULTY MENTOR: Shannon Jones

POSTER #8

ALBERT WU

Beta-Adrenergic Receptor Signaling Reduces Pro-Inflammatory Signaling and Promotes the M2 Phenotype in the RAW264.7 Macrophage Cell Line

FACULTY MENTOR: Krista Stenger

POSTER #9

TONY IANNIELLO

Genetic Continuity of Human Populations in South Asia

FACULTY MENTOR: Melinda Yang

POSTER #10

EMILY BREW

Examining The Inflammatory Effects of Woodsmoke on Murine Macrophages

FACULTY MENTOR: Shannon Jones

POSTER #11

DOMINIQUE PHAM

*Seed Bank Dynamics of the Emerging Invasive Species: Wavyleaf Basketgrass (*Oplismenus undulatifolius*)*

FACULTY MENTOR: Carrie Wu

POSTER #12

Poster Presentations

POSTER SESSION 1: 1:15-2:15 P.M.

BETTY DUAN

The Evolutionary History of the Derived ADH1B Alleles

FACULTY MENTOR: Melinda Yang

POSTER #13

DAISY BROOKS, ASHLEY FALLAS

Characterizing the Agrobacterium/Plant Interface

FACULTY MENTOR: B. Daniel Pierce

POSTER #14

JANHAVI BHALERAO

The Effects of Effort-Based Reward Training and Chemogenetic Activation of the Lateral Habenula on Behavioral and Neuroendocrine Responses in Stressful Contexts

FACULTY MENTORS: Kelly Lambert, Jacy Jacob

POSTER #15

NHYIRA ASAMOAH

Toxicity of E-Cigarettes

FACULTY MENTOR: Shannon Jones

POSTER #16

MICHAEL BAMBHA

Analysis of Phosphinopyrrole Isomers and Their Complexes

FACULTY MENTOR: Miles Johnson

POSTER #17

RAMSEY GOODNER

Synthesis of 2,3-dihydroisoxazoles from ketones and N-benzyl nitrones

FACULTY MENTOR: Wade Downey

POSTER #18

TRAVIS GREENE

Using Halogen Bonding to Detect Opioids

FACULTY MENTOR: Carol Parish

POSTER #19

Poster Presentations

POSTER SESSION 1: 1:15-2:15 P.M.

HELEN XIA

Addition of indoles to nitrones via Friedel-Crafts silyloxyaminoalkylation

FACULTY MENTOR: Wade Downey

POSTER #20

BENJAMIN SOLOMON, MASON ORTIZ

Exploration of Structural and Chemical Properties of New Transition Metal Complexes of 2-Pyridyl naphthyridine Ligands

FACULTY MENTORS: Emma Goldman, Raymond Dominey

POSTER #21

NAM PHAM

Can Inductive Effects be Quantified through Halogen Bonding: A Computational Assessment for Aromatic Systems

FACULTY MENTOR: Kelling Donald

POSTER #22

KARTHIK LALWANI

Sintering-Based In-Situ Synthesis and Characterization by TEM of Noble Metal Nanoparticles for Ceramic Glaze Color Control

FACULTY MENTORS: Leo Leopold, Ryan Coppage

POSTER #23

CAITLIN SALES

Determining the Medial Axis Structure for V-wall and Parabolic Model Under Multiple Controls

FACULTY MENTOR: Jeremy LeCrone

POSTER #24

KARTIKEY SHARMA

Markov Chains and the Degree Sequence Problem

FACULTY MENTOR: Prateek Bhakta

POSTER #25

Poster Presentations

POSTER SESSION 1: 1:15-2:15 P.M.

ANDRÉ SHANNON, NIKITA MOROZOV, ANGELA STEFANOVSKA, CHRIST ATHIOGBEY, VI PHAM, GRANT SZAJDA, OHENEBA BERKO

Explaining Automated Voice Processing Systems

FACULTY MENTOR: Douglas Szajda

POSTER #26

LOGAN WEST, HECTOR GOMEZ, RILEY PLACE, ANNA FRISBIE

Dead Wolf to Red Wolf: Virginia Reintroduction

FACULTY MENTORS: Peter Smallwood, Todd Lookingbill

POSTER #27

CLAIRE KING, NINA VANATTA, CHARLES MILLER, MORGAN MALSTEAD

Breathe Easier: A Multi-Pronged Approach to Evaluating and Addressing Disparities in Air Quality, Urban Heat, and Accessibility in Richmond

FACULTY MENTOR: Todd Lookingbill

POSTER #28

ELI BEECH-BROWN

Using Planet Data and Google Earth Engine to Automate Mapping of Informal Roads in the Amazon Borderlands.

FACULTY MENTORS: Stephanie Spera, David Salisbury

POSTER #29

DELANEY DEMARET

Tracking and Analysis of Socio-Environmental Impacts of Informal Road Building in the Amazon Borderlands

FACULTY MENTORS: Stephanie Spera, David Salisbury

POSTER #30

ALLISON WALTERS

Longitudinal Trends in Mental Health Among University of Richmond Students

FACULTY MENTORS: Rick Mayes, Peter LeViness

POSTER #31

ISRAA DRAZ, ANDREW BRADY, HENLEY SMITH, MILES GOLDMAN, VY BUI

Difference Sets with Symmetric Difference Properties

FACULTY MENTOR: James Davis

POSTER #32

Poster Presentations

POSTER SESSION 1: 1:15-2:15 P.M.

LILY DICKSON, THOMAS SPIKER

Discontinuous Medial Axis Structures: Dubins Car

FACULTY MENTOR: Jeremy LeCrone

POSTER #33

SOPHIA HARDTEN, CHLOE SECKART

An Evaluation of the Other-Race Effect Through the Attentional Blink

FACULTY MENTOR: Cindy Bukach

POSTER #34

ANNA MARSTON

Demographic Disparities in College Students' Psychological Adjustment During COVID-19

FACULTY MENTOR: Karen Kochel

POSTER #35

CAM SMITH, BRIANNA CHARLETON, JASMIN RUBIERA

Do Autistic Traits in Typically Developing Individuals Impact the Structural Encoding of Faces as Measured by the N170 Component

FACULTY MENTOR: Cindy Bukach

POSTER #36

ALEXIA REHLING

Coping Strategies of Grieving and Bereaved Students

FACULTY MENTOR: Kristjen Lundberg

POSTER #37

JARED BRASSIL

Awareness of Partisan Bias in Political Decision-Making

FACULTY MENTOR: Kristjen Lundberg

POSTER #38

LINDSAY EVERHART

Do Diversity, Equity, and Inclusion (DEI) Initiatives Cause More Harm Than Good for LGBTQ+ Employees?

FACULTY MENTOR: Kristjen Lundberg

POSTER #39

Poster Presentations

POSTER SESSION 1: 1:15-2:15 P.M.

CLAIRE MCLAM, SAMPSON VALDEZ

Error Monitoring and Clinical Perfectionism: Relation of Neural Processing to Two Proposed Dimensions of a Standardized Assessment

FACULTY MENTOR: Cindy Bukach

POSTER #40

ISABELLA HOLMGREN

Falling for Moses: The Role of Stroop Inhibition and Language Expertise

FACULTY MENTOR: Matthew Lowder

POSTER #41

MAMIE ZIEGLER

What Does "Avoidance Mode" Feel Like? The Effect of Avoidance Awareness on Negative Affect

FACULTY MENTOR: Laura Knouse

POSTER #42

LIV CLAYTON, LUCY PATTERSON

Circumstances Influencing Likelihood to Become an Organ Donor

FACULTY MENTOR: Camilla Nonterah

POSTER #43

AMARA NWANGWU

Barriers in Access to Care and Depressive Symptoms – The Role of Race/Ethnicity and Gender

FACULTY MENTOR: Camilla Nonterah

POSTER #44

LEON ZHENG

Virginian News Coverage on Undocumented Immigrant Health

FACULTY MENTOR: Miguel Diaz-Barriga

POSTER #45

PAIGE WILLIS

Lighting the Lavender Scare

FACULTY MENTORS: Maja White, Johann Stegmeir

POSTER #46

Poster Presentations

POSTER SESSION 2: 2:30-3:30 P.M.

TED CORL

Investigating the Redox Activity of Cu²⁺ Present in MEMO1

FACULTY MENTORS: Julie Pollock, Leo Leopold

POSTER #1

SYDNEY ROBINSON

Ruthenium Based Complexes in Photo-Activated Chemotherapy

FACULTY MENTOR: Julie Pollock, Michael Norris

POSTER #2

EMILY WARD

Characterization of Hypothetical Proteins in Proteus Mirabilis

FACULTY MENTOR: Jonathan Dattelbaum

POSTER #3

SAI POLURI

Analogs of 8-oxo-2'-deoxyguanosine

FACULTY MENTOR: Michelle Hamm

POSTER #4

HANNAH PARKER

Metabolic Map and Genetic Disorders

FACULTY MENTOR: Julie Pollock

POSTER #5

BRITTANY JOHNSON

Genetic Continuity in the Yellow River Basin

FACULTY MENTOR: Melinda Yang

POSTER #6

JESSICA GAROFALO

Investigation of the VirA Linker Domain to Characterize its Phenol Interactions

FACULTY MENTOR: B. Daniel Pierce

POSTER #7

Poster Presentations

POSTER SESSION 2: 2:30-3:30 P.M.

KRISTEN STARKS

Investigation of the Effects of N-Acetylcysteine on Neurodegeneration in Drosophila Models of Spinocerebellar Ataxia 3

FACULTY MENTOR: John Warrick

POSTER #8

SARENNA ENRIGHT

Epithelial Cell Inflammation Induced by Woodsmoke

FACULTY MENTOR: Shannon Jones

POSTER #9

MORGAN ABDO

*MLST of *B. burgdorferi**

FACULTY MENTOR: Jory Brinkerhoff

POSTER #10

AMARA TAYLOR, IVY DE SOUZA

Air Pollution and it's Affects on the Immune System

FACULTY MENTOR: Shannon Jones

POSTER #11

AIYAH ADAM

Mechanisms Underlying Dravet Syndrome

FACULTY MENTOR: Colleen Carpenter

POSTER #12

NESSA OKOROANYANWU, LESLEY BOADU

Carcinogen Effects on Epithelial Cells

FACULTY MENTOR: Shannon Jones

POSTER #13

JEAN AZAR-TANGUAY

Spin-Flip CCSD Characterizations of Heteroaromatic Pyrrole Diradicals

FACULTY MENTOR: Carol Parish

POSTER #14

Poster Presentations

POSTER SESSION 2: 2:30-3:30 P.M.

CATHERINE BAYAS

Investigating Molecular Interactions of MEMO1 with SRC and Estrogen Receptor Alpha

FACULTY MENTOR: Julie Pollock

POSTER #15

MIMI VISESTAMKUL, ALEXSAS MWANGO MISOKA

Incorporation of dCTP and dATP opposite OdG and analogues with KT R677A

FACULTY MENTORS: Michelle Hamm

POSTER #16

KINGSLEY DWOMOH, ZACH ROME, FELIX MINAMI

Continuous Flow Synthesis of Polyfunctionalized Pyrroles

FACULTY MENTOR: Emma Goldman, Raymond Dominey

POSTER #17

LEON ZHENG, JULIETTE COPELAND

Antimicrobial Natural Products

FACULTY MENTOR: Kristine Nolin

POSTER #18

ZENA ABRO, VICKY OSENGA

Synthesis of Biaryl Phosphatane Ligands for Transition Metal-Catalyzed Cross-Coupling Reactions

FACULTY MENTOR: Miles Johnson

POSTER #19

SEBASTIAN MENDOZA-GOMEZ

Spin Flip TDDFT/CCSD Characterization of FURAN

FACULTY MENTOR: Carol Parish

POSTER #20

CAMRYN CARTER

Interference of the hACE2 and SARS-CoV2 RBD interaction with Repurposed Molecules

FACULTY MENTOR: Carol Parish

POSTER #21

Poster Presentations

POSTER SESSION 2: 2:30-3:30 P.M.

HELENE LEICHTER

The Sculpting of 'The Veiled Lady'

FACULTY MENTOR: Alicia Díaz

POSTER #22

KATHRYN GRAGE

Iterative Forecasting Models Create Accurate Predictions for the Near-Future Spread of an Invasive Insect Pest

FACULTY MENTORS: Jonathan Walter, Kristine Grayson

POSTER #23

VIOLET JETTON, DOMINIQUE PHAM

Mapping and Analyzing the Distribution of Wavy Leaf Basket Grass

FACULTY MENTORS: Carrie Wu, Beth Zizzamia

POSTER #24

ANNA FRISBIE

The Potential Effects of Transboundary Road-Building in the Southwestern Amazon Shared by Peru and Brazil

FACULTY MENTORS: Stephanie Spera, David Salisbury

POSTER #25

WILLIAM HEINLE

Deforestation in Multiuse Protected Areas in Madagascar

FACULTY MENTORS: Sandra Joireman, John Scrivani

POSTER #26

CHARLES MULLIS

Connectivity in the Urban Landscape (2015–2020): Who? Where? What? When? Why? and How?

FACULTY MENTOR: Todd Lookingbill

POSTER #27

WILLIAM DAVIS

Transmediality of S.T.A.L.K.E.R.

FACULTY MENTOR: Yvonne Howell

POSTER #28

Poster Presentations

POSTER SESSION 2: 2:30-3:30 P.M.

OLIVIA BARLOW, YUNZE WANG, YIXUAN ZHAO, DITRICK MWALONGO, AAMY BAKRY, HANNAH LI

Towards a Mathematical Model of the Effect of Inhaled Toxicants and Antioxidants on the Inflammatory Response

FACULTY MENTORS: Marcella Torres, Kathy Hoke

POSTER #29

ELEAZER AFOTEY

FINTEC in Ghana

FACULTY MENTOR: Douglas Szajda

POSTER #30

MILES GOLDMAN, ISRAA DRAZ, YUHAN ZHOU, IVANA FILIPOVIC, HENLEY SMITH, ANDREW BRADY, MEREDITH SCHULTEN, VY BUI

Difference Sets, Designs, and Relative Difference Sets

FACULTY MENTOR: Jim Davis

POSTER #31

ANNA FORTUNATO, DYLAN HOOPER

Space Race to the Curved Base: Discontinuous Medial Axis Structures in Various Obstacle Spaces and Control Models

FACULTY MENTOR: Jeremy LeCrone

POSTER #32

ERIN BURNS

Driving is a No (New) Brainer: The Impact of Adult Neurogenesis on Cognitive Learning in Male Long-Evans Rats

FACULTY MENTORS: Kelly Lambert, Jacy Jacob

POSTER #33

BRIANNA CANTRALL

Optimal Method for Reconstructing Polychromatic Maps from Broadband Observations with an Aysmmetric Antenna Pattern

FACULTY MENTOR: Emory Bunn

POSTER #34

Poster Presentations

POSTER SESSION 2: 2:30-3:30 P.M.

JOSEPH STERLING

Estimation of pure B power in polarized CMB data via Gibbs sampling

FACULTY MENTOR: Emory Bunn

POSTER #35

HELEN WALLACE, MCKENNAH LAUBER

The Motivated Use of Colorblindness in a University-Wide Movement for Racial Justice

FACULTY MENTORS: Kristjen Lundberg, Crystal Hoyt

POSTER #36

SADIE WENGER, KELLY SAVERINO

An Exploration of Tool-Use, Flexible Cognition, and Cultural Behaviors in Semi-Natural Java Macaques

FACULTY MENTORS: Kelly Lambert, Jacy Jacob

POSTER #37

BRIANNA CHARLTON

Other Race Faces Look the Same: Is Motivation Enough to Diminish this Effect?

FACULTY MENTORS: Cindy Bukach

POSTER #38

EMMA BENDER, MACKENZIE SEWARD, JEN SCHLUR, ANNIE BECKERMAN

Predictors of Attitudes Towards BLM

FACULTY MENTOR: Jane Berry

POSTER #39

KAYLA SCHILTZ, EMILY HUESMAN

Are Racial Microaggressions Related to Colorblind and White Privilege Ideologies?

FACULTY MENTOR: Jane Berry

POSTER #40

LAYLA COBRINIK

The Warmline Study

FACULTY MENTOR: Kristjen Lundberg

POSTER #41

Poster Presentations

POSTER SESSION 2: 2:30-3:30 P.M.

ALLISON WALTERS

Stigma and Anxiety as Barriers to Help-Seeking Among University of Richmond Students

FACULTY MENTOR: Kristjen Lundberg

POSTER #42

HYEWON HONG

Friendship in a Pandemic: An Experimental Intervention to Test the Protective Role of Friendship Quality

FACULTY MENTORS: Kristjen Lundberg, Karen Kochel

POSTER #43

ANTONIO CARDOSO

Individual Differences in Processing of Garden-Path Sentences: The Role of Obsessive Compulsive Personality Traits

FACULTY MENTOR: Matthew Lowder

POSTER #44

ADDI MANSINI

Examining Protective Quality of Sense of Belonging and Friendship Quality on Peer Victimization Outcomes

FACULTY MENTOR: Karen Kochel

POSTER #45

CAMERON MCKENDRICK

Evaluating Hyperfocus Prevalence through Ecological Momentary Assessment

FACULTY MENTOR: Laura Knouse

POSTER #46

MICHALA DINI

The Emotional Mechanisms of Altruism Born of Suffering

FACULTY MENTOR: Kristjen Lundberg

POSTER #47

ISABELLE WARREN, ELIZABETH POPOVICH, CAROLINE GLASER

Support for BLM: The Role of Childhood Factors and Time Since the 2020 Uprisings

FACULTY MENTOR: Jane Berry

POSTER #48

Poster Presentations

POSTER SESSION 2: 2:30-3:30 P.M.

**JEN SCHLUR, EMMA BENDER, ANNIE BECKERMAN, MACKENZIE SEWARD,
OLIVIA HARDING**

Bots Invaded Our Study of Black Lives Matter

FACULTY MENTOR: Jane Berry

POSTER #49

KATHRINA DURANTE

Committed to the Cause or Performative Posting?: Developing a Measure of Internal and External Motivations for Online Activism

FACULTY MENTOR: Kristjen Lundberg

POSTER #50

ALISON ZHANG

Racial Homogeneity at Home and Race Essentialism: The Role of Interracial Friendship

FACULTY MENTORS: Kristjen Lundberg, Karen Kochel

POSTER #51

ALISA FOMINYKH

The Economic Blitzkrieging of Russia

FACULTY MENTOR: Michael Marsh-Soloway

POSTER #52

RAY BARR

Individualized History: Tobacco Workers Interred at East End Cemetery

FACULTY MENTOR: Elizabeth Baughan

POSTER #53

Poster Presentations

POSTER SESSION 3: 3:45-4:45 P.M.

DANNY FRASCELLA

*Effect of Retinoic Acid Receptors (RAR) on Spinal Cord and Hindbrain Territories in *Danio rerio**

FACULTY MENTOR: Isaac Skromne

POSTER #1

JOSHUA PANDIAN

*The Effect of Microbiome Composition on *Rickettsia parkeri* Prevalence in *Peromyscus leucopus* and *Sigmodon hispidus**

FACULTY MENTOR: Jory Brinkerhoff

POSTER #2

CORRI COOPER

*Autophagy-Mediated Neurodegeneration in *Drosophila* with Human Machado-Joseph Disease*

FACULTY MENTOR: John Warrick

POSTER #3

GABRIEL OFFENBACK, COLE FISHBERG

Pro-inflammatory Signaling in RAW264.7 macrophages

FACULTY MENTOR: Krista Stenger

POSTER #4

NINA PRICE

Physiological Actions of Hydrocinnamic Acid on Cardiac Ion Channels

FACULTY MENTOR: Linda Boland

POSTER #5

JONATHAN KAN

Tick Behavior in Varying Environments

FACULTY MENTOR: Jory Brinkerhoff

POSTER #6

LONDON NEMMERS, ANNA ALI

The Effects of Desiccation Stress on Desert Soil Nematodes

FACULTY MENTOR: Amy Treonis

POSTER #7

Poster Presentations

POSTER SESSION 3: 3:45-4:45 P.M.

ALLISON NGUYEN

*Leaf Ecophysiological Responses to Light Availability in *Oplismenus undulatifolius*, a Shade Tolerant Invasive Plant*

FACULTY MENTOR: Carrie Wu

POSTER #8

GRACE DAVIS

*Examining Critical Thermal Limits of *Lymantria dispar* Regarding Geographic Differences*

FACULTY MENTORS: Kristine Grayson, Jonathan Walters

POSTER #9

BRENDAN CROCKETT, NICK GONZALES

*Tracking Wild Rat Brains: Emerging Neurobiological Differences Between Urban Wild-Trapped and Laboratory Rats (*Rattus norvegicus*)*

FACULTY MENTOR: Kelly Lambert

POSTER #10

EMILY CASSADY

*Testing the Ability of Environmental Growth Chambers to Replicate Outdoor Growth Conditions Using the Invasive Forest Insect *Lymantria dispar* (L.)*

FACULTY MENTORS: Kristine Grayson, Hannah Coovert

POSTER #11

SINEAD DOWLING, KATHLEEN GARCHITORENA, ANNIE KWON

*Mutational Analysis of the *Agrobacterium* VirA Sensor Kinase Reveals AND/OR Gating Control*

FACULTY MENTOR: B. Daniel Pierce

POSTER #12

LEEANN DEMPSEY

The Effect of Wood Smoke on Human Lung Epithelial Cells

FACULTY MENTOR: Shannon Jones

POSTER #13

Poster Presentations

POSTER SESSION 3: 3:45-4:45 P.M.

ELENA MECCHI, ANH NGUYEN, LYNDDA CEVALLOS

Does Calcium Binding Affect Miro-binding to MYO19 or TRAK1 or 2 in Mitochondria?

FACULTY MENTOR: Omar Quintero-Carmona

POSTER #14

KHARMA HALL

Stxbp1b Epilepsy Modelling in Zebrafish

FACULTY MENTOR: Colleen Carpenter-Swanson

POSTER #15

ELSA KATARINA ACOSTA

An In-Silico Investigation of G-quadruplex Stabilization by DNA Telomerase Inhibitors for Anti-Cancer Applications

FACULTY MENTOR: Carol Parish

POSTER #16

JACOB AIRAS, TRAVIS GREENE

Using Halogen Bonding to Detect Opioids

FACULTY MENTOR: Carol Parish

POSTER #17

ANDREW FELIX

Green Synthesis of Pyrroles

FACULTY MENTOR: William O'Neal

POSTER #18

TESSA YARBROUGH

Electron Delocalization and Aromaticity in Inorganic Analogues of Small Ring Systems

FACULTY MENTORS: Kelling Donald

POSTER #19

LIAM DAY

Cerium(IV) Complexes in Biological Assays and Phosphate Bond Cleavage

FACULTY MENTORS: Dominique Williams

POSTER #20

Poster Presentations

POSTER SESSION 3: 3:45-4:45 P.M.

MAK CALLENDER

Expression, Purification, and Activity Investigation of STK1

FACULTY MENTOR: Julie Pollock

POSTER #21

MICHAEL RODRIGUEZ, TYLER CHONG

Synthesis of Styrenes from Aldehyde-aldehyde Aldol Coupling Products

FACULTY MENTOR: Wade Downey

POSTER #22

HALEY GLADDEN

Small Molecule Interference with the hACE2 and SARS-CoV RBD Complex Junction

FACULTY MENTOR: Carol Parish

POSTER #23

SADIESHA TAYLOR

Synthesis of Unsymmetrical Bis(phosphine)pyrrole Ligands and Their Nickel Complexes

FACULTY MENTOR: Miles Johnson

POSTER #24

CHARLI CHEN

Spin Flip TDDFT/CCSD Characterization of Thiophene Di-radicals

FACULTY MENTOR: Carol Parish

POSTER #25

JOLAN MOTYKA

Mining Nature for New Antibiotics

FACULTY MENTOR: Jonathan Dattelbaum

POSTER #26

MARISSA GOODALL

Alternative Medicine & Black, College-Educated Women

FACULTY MENTORS: Rick Mayes

POSTER #27

Poster Presentations

POSTER SESSION 3: 3:45-4:45 P.M.

NOAH ROBINSON, NAM PHAM, WILLIAM RICE, PAIGE DELSA

Strong Halogen Bonding Tendencies Below Period Two

FACULTY MENTORS: Donald Kelling

POSTER #28

EMILY DIXON, DANIEL SARAVIA-ROMERO

Concessions Uncovered: Westhampton Park in Context

FACULTY MENTOR: Elizabeth Baughan

POSTER #29

TAYLOR GRINDLE

Liberosis

FACULTY MENTOR: Alicia Díaz

POSTER #30

KAYLA SCHILTZ

Hush

FACULTY MENTOR: Alicia Díaz

POSTER #31

TAYLOR COLEMAN, INDYA WOODFOLK, KATHRYN GRAGE, VIRGINIA MEAD

Management Strategies for Improving the Quality of Westhampton Lake

FACULTY MENTORS: Peter Smallwood, Todd Lookingbill

POSTER #32

TAYLOR COLEMAN

Remote Sensing of the Florida Gulf Coast: An Investigation of the 2017-2019 Red Tide Event

FACULTY MENTOR: Stephanie Spera

POSTER #33

ELIZA HERRENKOHL, ELSPETH COLLARD

COVID-19 within Indigenous Communities of the Peruvian Amazon: An Ucayali Case Study

FACULTY MENTORS: Stephanie Spera, David Salisbury

POSTER #34

Poster Presentations

POSTER SESSION 3: 3:45-4:45 P.M.

ELIZA HERRENKOHL, BOB CHIABALMACEDA, ELIZA HERRENKOHL, ANTONIA KEMPE, SURAYA SOUIDI

Conservation Efforts in Richmond, Virginia

FACULTY MENTOR: Todd Lookingbill

POSTER #35

LINDSEY BARNARD

The Geolocation of Facebook and Twitter Posts on the Proposed Highway between Pucallpa, Peru and Cruzeiro do Sul, Brazil

FACULTY MENTORS: David Salisbury, Stephanie Spera

POSTER #36

JULIA STEVERMER

Defining the Holodomor a Title and Accountability to the Ukrainian Terror Famine of 1932-1933

FACULTY MENTOR: David Brandenberger

POSTER #37

KELLY SAVERINO, SADIE WENGER

An Exploration of Tool-Use, Flexible Cognition, and Cultural Behaviors in Semi-Natural Java Macaques

FACULTY MENTOR: Kelly Lambert

POSTER #38

WILSON BERRY

Examining the Relationship Between Interracial Contact and Support for Social Change on the UR Campus

FACULTY MENTOR: Kristjen Lundberg

POSTER #39

RYAN WIGGINTON

Do ADHD Symptoms Strengthen the Relationship Between Depression/Anxiety and Avoidance?

FACULTY MENTOR: Laura Knouse

POSTER #40

Poster Presentations

POSTER SESSION 3: 3:45-4:45 P.M.

MAMIE ZIEGLER, ALISON ZHANG, HOOR UL AIN

Personality Matters: Neuroticism and Conscientiousness are Associated with College Students' Avoidance in Daily Life

FACULTY MENTOR: Laura Knouse

POSTER #41

EVE RIDENHOUR, MIRANDA MOE

Popular Children's Perceived Competence in School-Based Peer Interactions

FACULTY MENTOR: Karen Kochel

POSTER #42

ELENA BAGNOLI, ALYSSA HENDRICKS, BAILEY SANTAGUIDA

How Positive Psychology Benefits the Well-Being of Solid Organ Transplant Recipients

FACULTY MENTOR: Camilla Nonterah

POSTER #43

MARY SANCHEZ

Cultural Femininity in Denmark

FACULTY MENTOR: Olivier Delers

POSTER #44

SHAYLEN LAFFERTY

Props & Posters: Perfect Arrangement

FACULTY MENTOR: Johann Stegmeir

POSTER #45

LIAM KEENAN, EMMA SLOANE, SHAYLEN LAFFERTY, PAIGE WILLIS, GABRIEL MATTHEWS, OONA ELOVAARA, OLIVE GALLMEYER

Perfect Arrangement - Sound Design

FACULTY MENTOR: Maja White

POSTER #46

EMMA SLOANE

Perfectly Queer: Directing an LGBTQ+ Production

FACULTY MENTORS: Walter Schoen

POSTER #47

POSTER SESSION 3: 3:45-4:45 P.M.

OLIVE GALLMEYER

The Lavender Scare on Stage: Perfect Arrangement Dramaturgical Research

FACULTY MENTOR: Walter Schoen

POSTER #48

SHAYLEN LAFFERTY, EMMA SLOANE, PAIGE WILLIS, GABRIEL MATTHEWS, LIAM KEENAN, OLIVE GALLMEYER, OONA ELOVAARA

Perfect Arrangement

FACULTY MENTOR: Johann Stegmeir

POSTER #49

GABRIEL MATTHEWS

Scenic Design for Perfect Arrangement

FACULTY MENTORS: Vicki Davis

POSTER #50

OONA ELOVAARA

Costume Design for the production of Perfect Arrangement

FACULTY MENTOR: Johann Stegmeir

POSTER #51



THE **SCHOOL OF ARTS & SCIENCES** IS THE HEART OF THE UNIVERSITY OF RICHMOND.

Though we have an expansive and diverse list of expertise, experiences, and learning opportunities we pride ourselves on being a tight-knit community of lifelong learners bound together by one common mission. Our A&S community — made up of students, faculty, alumni, and staff — questions the unknown, seeks answers, and thrives by learning how to turn new-found knowledge into action. From art history to physics, Arts & Sciences prepares students to be committed lifelong learners who challenge societal and intellectual barriers, who provide ethical leadership, and who lead sustainable and meaningful lives.

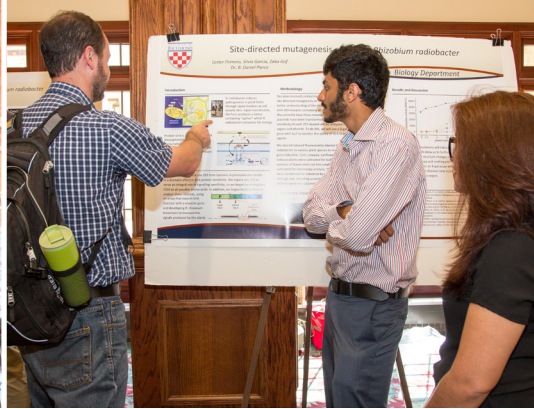
Every Richmond student begins their undergraduate career in Arts & Sciences, placing us at the heart of Richmond's liberal arts experience. We implement a broad-based, integrative educational approach while valuing the power of an inclusive community where faculty, students, alumni, and staff all inquire, discover, and take risks together.

Together, we're fostering intellectually nimble global leaders capable of critical thinking and adaption in a diverse and ever-changing world.

BOATWRIGHT LIBRARY ADMINISTRATION WING
261 Richmond Way
University of Richmond, VA 23173
804-289-8416 | as.richmond.edu



RICHMOND
School of Arts & Sciences™



A TRADITION OF CELEBRATING OUR **COMMUNITY** OF **LEARNERS**

PAST A&S STUDENT SYMPOSIUM PHOTOGRAPHY BY KIM LEE SCHMIDT



RICHMOND
School of Arts & Sciences™

University of Richmond
261 Richmond Way
Richmond, VA 23173